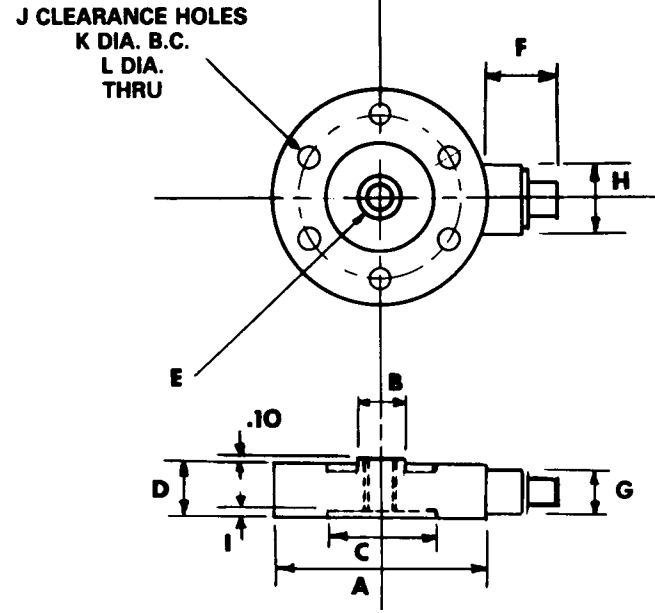


ALD-DLC: FLAT DISC LOAD CELL



SPECIFICATIONS:

Excitation:	10 VDC
Output:	2mV/V (Nominal)
Bridge Resistance:	700Ω (Nominal)
Non-Linearity:	0.1% F.S. to 0.3% F.S.
Hysteresis:	0.1% F.S.
Non-Repeatability:	0.1% F.S.
Compensated:	15°F to 160°F
Operating:	-65°F to 250°F
Temp. Effect:	
On Zero:	0.008%/°F
On Span:	0.008% F.S./°F
Safe Overload:	150% F.S.

Fatigue resistance, precision, accuracy, and low profile are just a few of the features offered by the A.L. Design Flat Disc Load Cell. This versatile load cell is the result of years of design and development. It is well suited to any application requiring a rugged load sensor. This Load Cell is available for wide load ranges. It offers the superior characteristics of stiffness and low profile, allowing for limited space applications. Further, the A.L. Design Flat Disc Load Cell is extremely resistant to extraneous bending and side loading forces, minimizing the chance of load cell failure.

Previous applications of this general purpose load cell include the aerospace and aviation industry, the nuclear field, along with automotive, construction, marine, and other industrial uses.

When using this load cell in tension mode, a tension base is recommended, use flat and mating surfaces hardened to Rockwell 44C.

Capacity	DIMENSIONS IN INCHES											
	A	B	C	D	E	F	G	H	I	J	K	L
5, 10 & 25 lb	2.5	0.37	1.7	0.8	¼-28	0.75	0.75	1.25	0.03	6	2.000	0.180
50, 100, 250, 500 & 1000 lb	3.0	0.56	1.8	1.0	3/8-24	0.75	0.75	1.25	0.03	6	2.250	0.281
2K, 3K, 4K, & 5K lb	3.5	0.69	2.0	1.0	½-20	0.75	0.75	1.25	0.03	6	2.625	0.344
7500, 10,000, & 15,000 lb	5.5	1.9	3.7	1.8	1-14	1.25	1.5	2.0	0.10	8	4.500	0.406
20K, 30K, & 50K lb	6.0	2.3	4.2	1.8	1½-12	1.25	1.5	2.0	0.10	8	4.875	0.531
60K, 75K, & 100K lb	7.5	3.0	5.0	2.0	2-12	1.25	1.5	2.0	0.10	8	6.000	0.781
125K, 150K, & 200K lb	9	3.6	5.6	3.0	2½-12	1.25	1.5	2.0	0.10	8	7.250	1.032
300K & 400K lb	14	7.5	10.0	4.25	3½-8	1.25	1.5	2.0	0.15	12	11.750	1.032

A.L. Design, Inc. 1411 Military Road • Buffalo, NY 14217-1395
 Phone (716) 875-6240 • Fax (716) 875-2404
<http://www.aldesigninc.com>