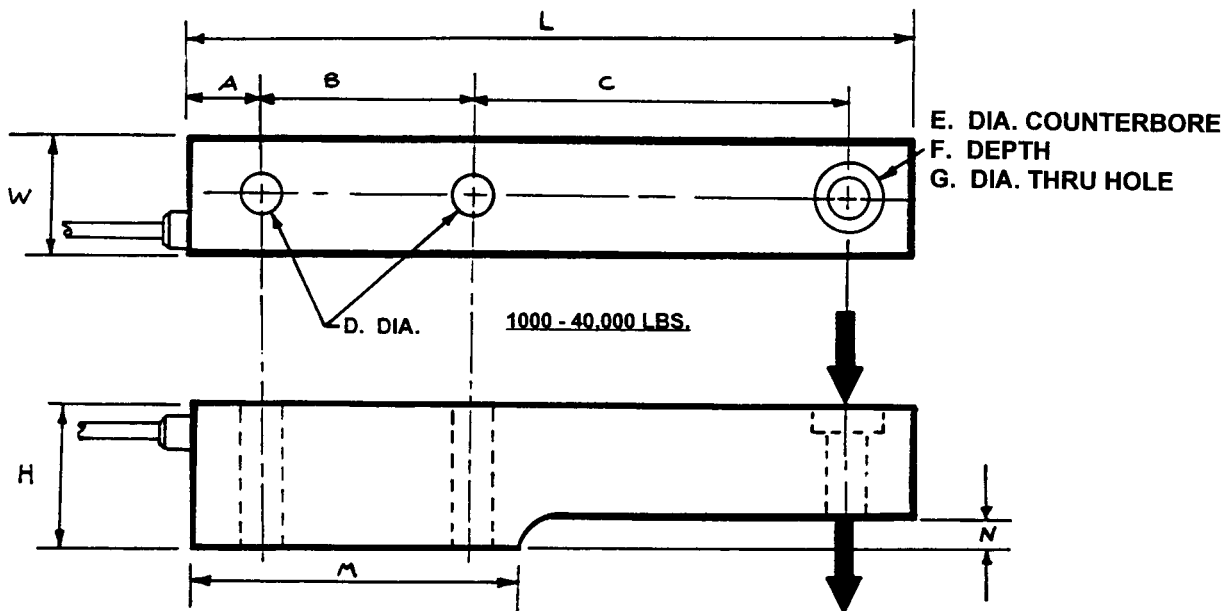
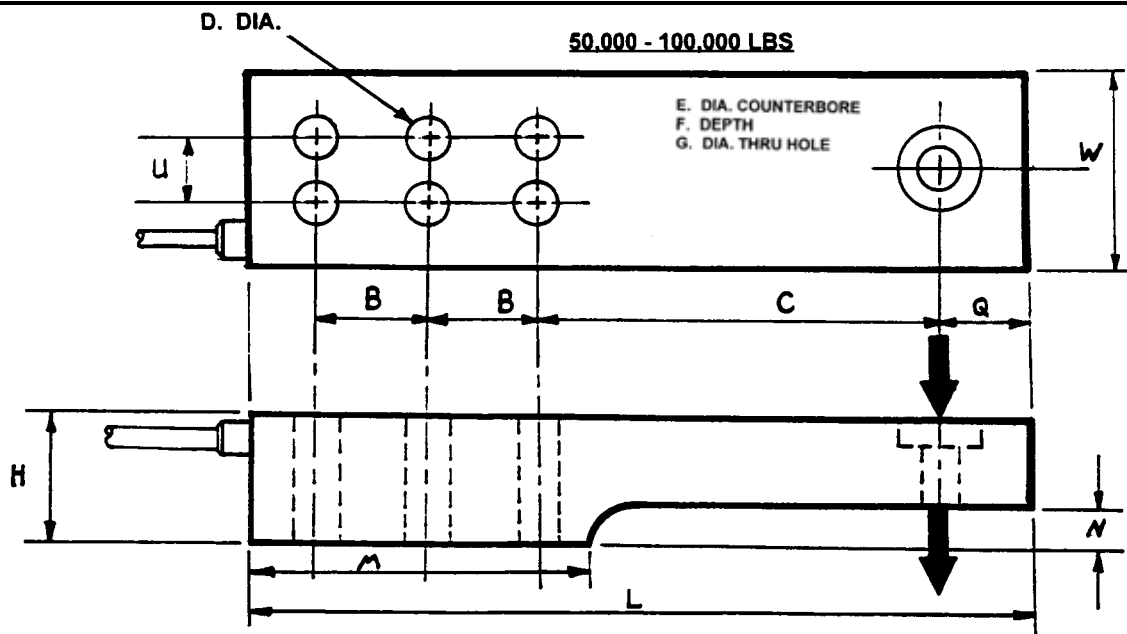


ALD-SB CANTILEVER BEAM



Capacity (lb)	DIMENSIONS IN INCHES											
	M	G	F	E	C	B	A	D	H	W	L	N
1,000 to 5,000	0.4	11/16	1/2	1 3/16	3 7/8	2 1/2	3/4	0.52	1.90	1.45	8.00	0.45
10,000 to 20,000	4 5/8	1.00	5/8	1 5/8	4 7/8	2 5/8	0.80	7/8	2 3/4	1.90	9 1/4	0.9
40,000	6 1/2	1 1/2	3/4	1 7/8	6 1/4	3 1/2	1 1/4	1 3/8	3 3/4	2 3/4	12 1/2	0.5



Capacity (lb)	DIMENSIONS IN INCHES												
	M	G	F	E	C	B	D	H	W	L	N	Q	U
50,000	7.38	1.75	1.21	2.89	7.12	3.00	7/8	4.62	3.75	14.75	1.45	1.75	2
100,000	8.25	1.75	1.25	2.58	7.75	3.62	7/8	5.62	3.75	16.38	1.65	1.89	2