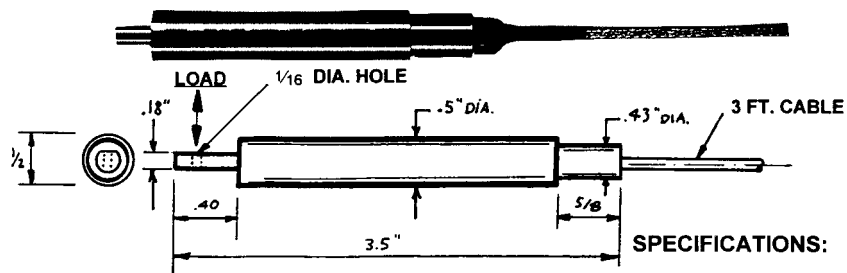


# ALD-CANTI-BEAM

The ALD-CANTI-BEAM load cell is designed to measure low forces upward or downward. The unit is very accurate. 0.1% Full Scale non-linearity and hysteresis. Overload stops are built in to provide reliability. The small dimensions of the unit allows installation into your existing system. Load ranges are 50 grams to 10 lb.

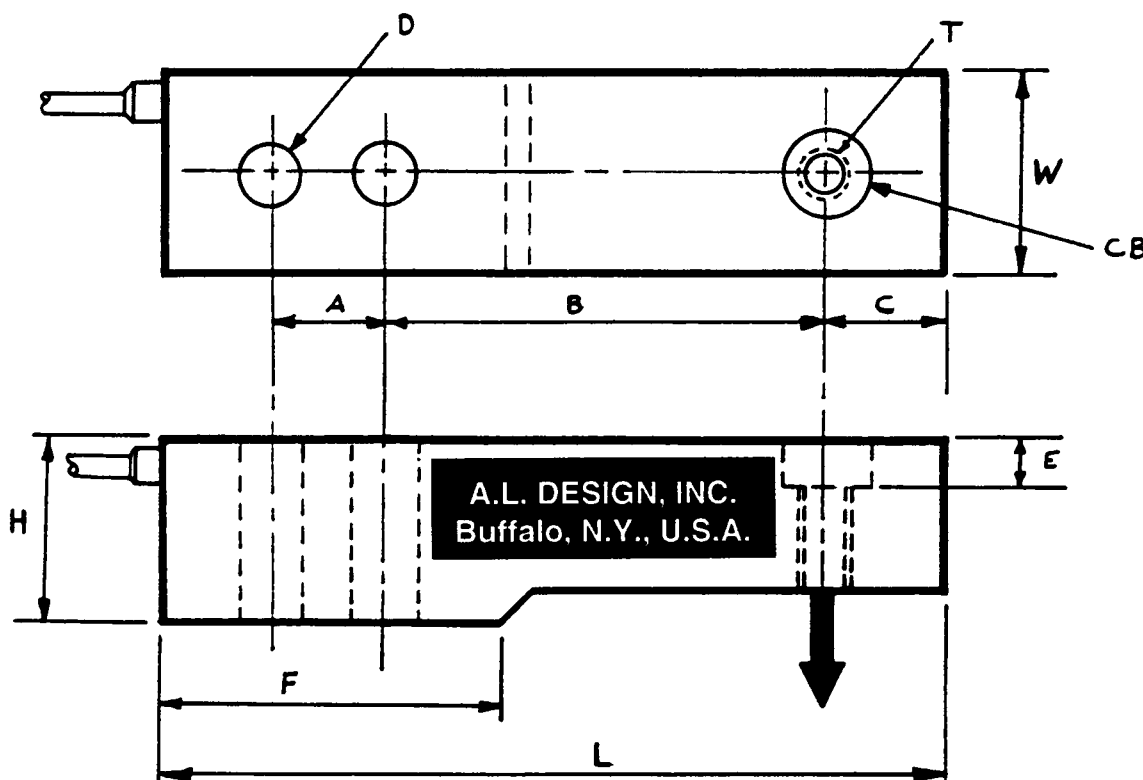
## SPECIFICATIONS:

Load Ranges:	50, 100, 200, 500, 1000 g 2, 5, 10 lb
Non-linearity:	± 0.1% F.S.
Hysteresis:	± 0.1% F.S.
Non-repeatability:	± 0.03% F.S.
Output:	2mV/V (Nominal)
Resolution:	Infinite
Temperature, operating:	0°F to 200°F
Temperature, compensated:	60°F to 160°F
Temperature Effect	
Zero (max):	0.15% F.S. / °F
Span (max):	0.15% F.S. / °F
Excitation:	10 VDC
Bridge Resistance:	350Ω



For best results use an amplifier when the load range is under 10 lb.

# ALD-XY SMALL BEAM



Capacity (lb)	DIMENSIONS IN INCHES										
	T	E	D	CB	F	W	H	L	A	B	C
1,000 to 4,000	1/2-20 UNF	0.58	0.53	0.82	2.25	1.22	1.20	5.1	1.00	3.00	0.5
5,000	3/4-16 UNF	0.70	0.78	1.20	3.00	1.45	1.45	6.75	1.50	3.75	0.75
10,000	3/4-16 UNF	0.80	0.78	1.20	3.00	1.45	1.95	6.75	1.50	3.75	0.75

A.L. Design, Inc. 1411 Military Road • Buffalo, NY 14217-1395  
 Phone (716) 875-6240 • Fax (716) 875-2404  
<http://www.aldesigninc.com>