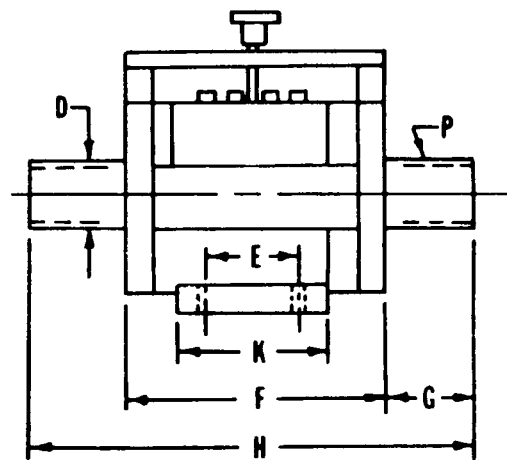
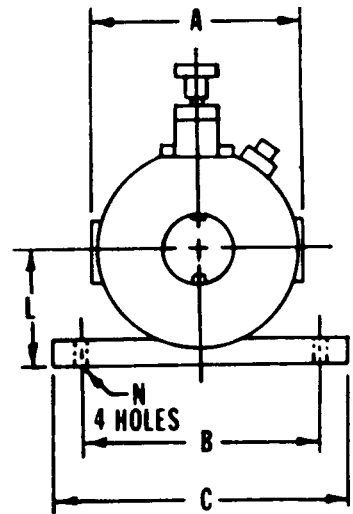


# SLIP RING TORQUE SENSORS

COMPACT, EFFICIENT, AND IDEAL FOR LIMITED SPACE APPLICATIONS



## SPECIFICATIONS:

RPM Range:	0 to 6500 RPM (Nominal)
Capacities:	1 to 100,000 in.lb (1 to 115,000 Kg.cm)
Bridge Resistance:	350Ω (Nominal)
Bridge Excitation:	10 VDC (15 VDC max)
Bridge Output:	2mV/V (Nominal)
Comp. Temp.:	+15°F to 150°F (-10°C to +65°C)
Useable Range:	-50°F to 200°F (-45°C to +100°C)
Special Option:	-400°F to +500°F
Zero shift due to temp.:	±0.004% F.S./ °F
Temp. effect on output:	±0.004% F.S./ °F
Non-linearity:	±0.1% F.S.
Hysteresis:	±0.1% F.S.
Non-repeatability:	±0.1% F.S.

Model	DIMENSIONS IN INCHES											
	H	F	G	A	D	P	C	K	L	B	E	N
TS - 1,5,10,20,50 in.lb	7.00	4.00	1.50	3.00	0.75	1/4 x 1/8	3.00	-	1.70	2.60	4 3/8	0.250
TS - 100 in.lb	10.00	5.80	2.10	4.00	1.00	1/4 x 1/8	4.80	3.50	2.10	4.00	2.75	0.28
TS - 200 in.lb	10.00	5.80	2.10	4.00	1.00	1/4 x 1/8	4.80	3.50	2.10	4.00	2.75	0.28
TS - 500 in.lb	10.00	5.80	2.10	4.00	1.00	1/4 x 1/8	4.80	3.50	2.10	4.00	2.75	0.28
TS - 1K in.lb	10.00	5.80	2.10	4.00	1.00	1/4 x 1/8	4.80	3.50	2.10	4.00	2.75	0.28
TS - 2K in.lb	10.00	5.80	2.10	4.00	1.00	1/4 x 1/8	4.80	3.50	2.10	4.00	2.75	0.28
TS - 5K in.lb	12.80	7.20	2.80	4.70	1.50	3/8 x 3/16	6.30	4.00	2.50	5.20	3.00	0.41
TS - 10K in.lb	12.80	7.20	2.80	4.70	1.50	3/8 x 3/16	6.30	4.00	2.50	5.20	3.00	0.41
TS - 20K in.lb	14.70	6.90	3.90	5.50	2.25	1/2 x 1/4	7.30	5.30	3.00	6.00	4.00	0.50
TS - 50K in.lb	15.00	8.75	3.00	7.00	2.50	3/4 x 3/8	10.00	5.00	4.20	8.00	3.00	0.50
TS - 100K in.lb	15.00	8.75	3.00	7.00	2.50	3/4 x 3/8	10.00	5.00	4.20	8.00	3.00	0.50
TS - 200K in.lb	20.00	10.00	5.00	8.00	3.50	1 x 1/2	12.00	6.00	4.50	10.00	4.00	0.75
TS - 300K in.lb	20.00	10.00	5.00	8.00	4.00	1 x 1/2	12.00	6.00	4.50	10.00	4.00	0.75

A.L. Design, Inc. 1411 Military Road • Buffalo, NY 14217-1395  
 Phone (716) 875-6240 • Fax (716) 875-2404  
<http://www.aldesigninc.com>