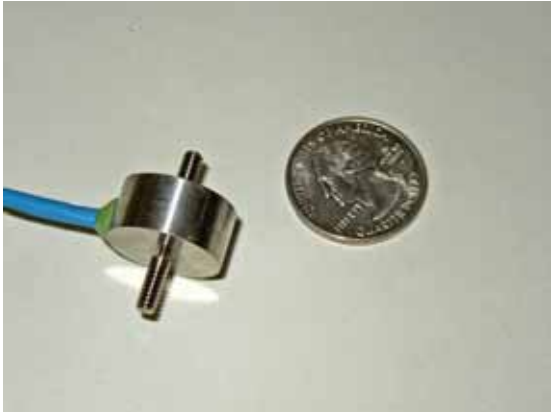


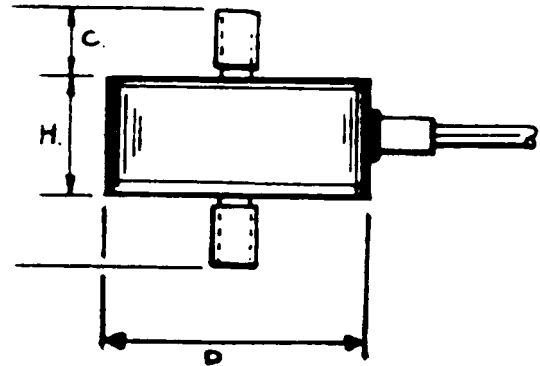
MINIATURE LOAD CELL: ALD-MINI-UTC-M



Male Threads • Tension/Compression

The ALD-MINI-UTC-M Load Cells are one of our most reliable and accurate load cells. The internal construction of these load cells consists of a full four arm wheatstone bridge which assures excellent long term accuracy from 10 grams to 10,000 pounds.

Note: If the capacity is 1000 grams or less, the material is aluminum.



SPECIFICATIONS:

Non-linearity:	0.2%
Hysteresis:	0.1%
Non-repeatability:	0.1%
Output:	2mV/V (Nominal)
Excitation:	10 VDC

OPTIONS:

- Waterproof exit cable
- Metric threads

For best results use an amplifier when the load range is under 10 lb.

Load	Linearity & Hysteresis	T	D	H	C	Strain Gage
50, 150, 250, 500 g	±0.2% F.S.	6-32 NC	1.00	0.50	0.40	350Ω
1000 g	±0.2% F.S.	¼-28 NF	1.00	0.50	0.40	350Ω
5, 10, 25, 50, 100, 250, 500, 1000 lb						
2000, 3000 lb	±0.2% F.S.	3/8-24 UNF	1.00	0.75	0.50	350Ω
4000, 5000 lb	±0.2% F.S.	½-20 UNF	1.25	1.00	0.90	350Ω
75000, 10,000 lb	±0.2% F.S.	¾-16 UNF	1.25	1.00	0.90	350Ω

MINIATURE LOAD CELL: ALD-MINI-UTC-F

Female Threads • Tension/Compression

The ALD-MINI-UTC-F Load Cell consists of the same internal construction and high quality as our MINI-UTC-M except for the female mounting threads.

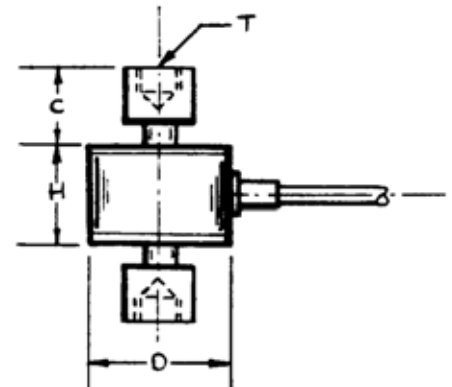
SPECIFICATIONS:

Non-linearity:	0.2%
Hysteresis:	0.1%
Non-repeatability:	0.1%
Output:	2mV/V (Nominal)
Excitation:	10 VDC

OPTIONS:

- Waterproof exit cable
- Metric threads

For best results use an amplifier when the load range is under 10 lb.



Load	Linearity & Hysteresis	T	D	H	C	Strain Gage
50, 150, 250, 500 g	±0.2% F.S.	1/4 -28 NF	1.00	0.80	0.550	350Ω
1000 g	±0.2% F.S.	1/4 -28 NF	1.00	0.80	0.550	350Ω
5, 10, 25, 50, 100, 250 lb						
500, 1000 lb	±0.2% F.S.	1/4 -28 NF	1.00	0.80	0.555	350Ω

A.L. Design, Inc.

1411 Military Road • Buffalo, NY 14217-1395
 Phone (716) 875-6240 • Fax (716) 875-2404
<http://www.aldesigninc.com>