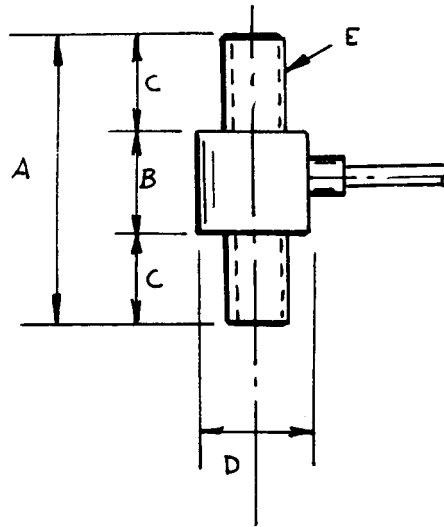


# STUD

The ALD-STUD is an inexpensive load cell designed for compression / tension measurements. It can be installed almost anywhere to measure tensile or compressive forces.



## SPECIFICATIONS:

Output Resistance:	350Ω (Nominal)
Input Resistance:	350Ω (Nominal)
Excitation:	10 VDC or AC
Sensitivity:	2mV/V (Nominal)
Non-Linearity:	±0.2% F.S.
Hysteresis:	±0.2% F.S.
Compensated Temp. Range:	15°F to 150°F
Safe Overload:	150% Rated capacity
Ultimate Overload:	250% Rated capacity
Zero Balance:	Better than 1% F.S.

Load (lb)	DIMENSIONS IN INCHES				
	A	B	C	D	E
500, 1000, 2000, 10k	3	1.4	0.80	0.90	5/8-11 UNC
15,000	3.25	1.35	0.95	1.25	¾-10 UNC
30,000	4.25	1.5	1.5	1.5	1-12 UNF
40,000	6	2	2	2	1 ¼-12 UNF
50,000	6	2	2	2	1 ¼-12 UNF
100,000	8	2	3	2.5	2-12 UN
150,000	8	2	3	2.5	2 ¼-12 UN
300,000	11	3	4	4	3 5/8-12 UN